



KITCHEN MINDER™ *

Version 5.0 Update

July, 2009



It's here! We are happy to announce a significant update to your KITCHEN MINDER™ system! Version 5.0 will replace all previous versions of software in the KITCHEN MINDER™, PC MINDER™, and the optional MINDER BUDDY™ and MANAGER'S ASSISTANT™ components. Over the past two years, we have received significant and very helpful feedback from users of the KITCHEN MINDER™ system. Version 5.0 was designed to address many of the suggestions and requests that we have received from you.

Please review this document completely before installing and using the new software. After reviewing the entire document, follow the instructions provided in Section A of this guide to complete the update for PC MINDER™ on your computer. After the PC MINDER™ software has been successfully updated, continue following the guide to ensure your hardware components are also properly updated.

Note: You should allow approximately one hour of non-interrupted time to complete the entire installation. You will need complete access to your back of house computer and all KITCHEN MINDER™ related hardware during the installation. **Installation of the upgrade will require a reboot of your back of house computer. It is extremely important that you understand any impact this may have on your POS system.** For this reason it is strongly recommended that you complete the upgrade during slow business periods or when your restaurant is closed, if necessary.

Once the update has been successfully completed, you should review all changes with each Manager. The operational enhancements are included in Section B of this guide. The enhancements included in version 5.0 should not impact the activities of your Team Members, and as such no additional Team training should be required.

BEFORE YOU BEGIN – You MUST verify that your connection from the back of house computer to the KITCHEN MINDER™ is functioning properly. To test this, open the PC MINDER™ Software, click on the “Data Transfer” tab, and then select the “Send Kitchen Minder Format” button. If the file is not sent successfully, **STOP!** This issue must be resolved first before you begin the update. Contact ICC Technical Support at 877-ICC-8788 (or local ICC representative).

A. INSTALLING THE VERSION 5.0 UPDATE

IMPORTANT, PLEASE READ! During the upgrade process, all QES™ charts will be erased on the back of house computer. If you wish to keep this information in the restaurant, you must print each day's chart before beginning the upgrade process. This information will still be accessible at the QES Online™ Site as well.

STEP #1 – CHANGE THE KITCHEN MINDER™ TO COMPUTER ADAPTOR (IF NECESSARY)

Note: If you are using MINDER MODEM™ on an off-site computer, **PROCEED TO STEP #2.**

A. Identify the location on your back of house computer where the gray cable from the KITCHEN MINDER™ connects to the computer. The cable will connect to the computer via a 9-pin serial port or through a USB port. A gray wire is connected to the adaptor. If your adaptor is not marked with the number 801114 (see photo), you must contact ICC for a free replacement. **DO NOT** continue until the adaptor has been replaced! If you have the 801114 adaptor already, proceed to Step #2 now.



KITCHEN MINDER™ Adaptor (Must Display 801114)

B. Remove the existing adaptor and replace it with the new adaptor provided with your software update kit. Be sure to tighten the screws on the adaptor to reduce the likelihood of accidentally disconnecting it later.

C. When finished, verify you have the new adaptor connected by viewing the number printed on the adaptor (**801114**). **Discard the old adaptor when you have completed the entire software update and have verified the KITCHEN MINDER™ System is fully functional.**



Serial to Computer



USB to Serial

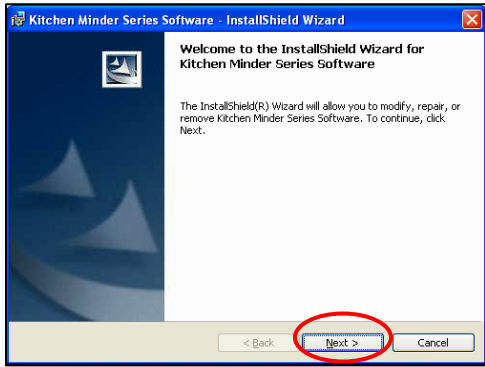
Update PC MINDER™ on the COMPUTER

STEP #2 – LOAD PC MINDER™ VERSION 5.0 UPDATE ON YOUR BACK OF HOUSE COMPUTER

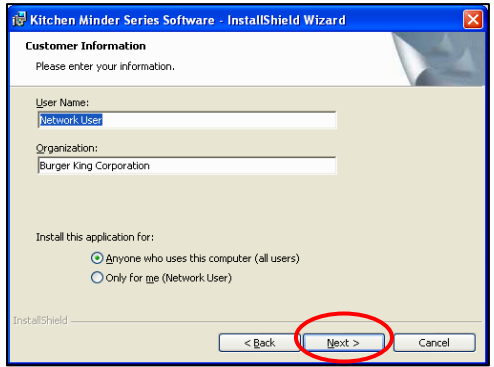


A. Load the upgrade file onto the back of house computer

B. Double-click on the upgrade file to start the installation process



C. Select "Next" on InstallShield Wizard Screen

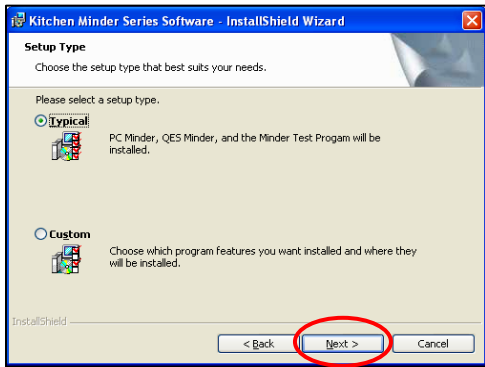


D. Type User Name and Organization if desired, then select the "Anyone who uses this computer" button

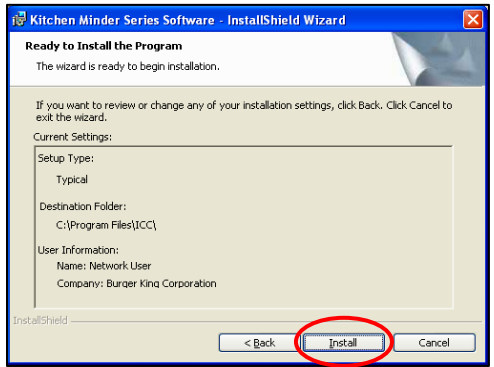
E. Select "Next"



F. Select "Next" on this screen

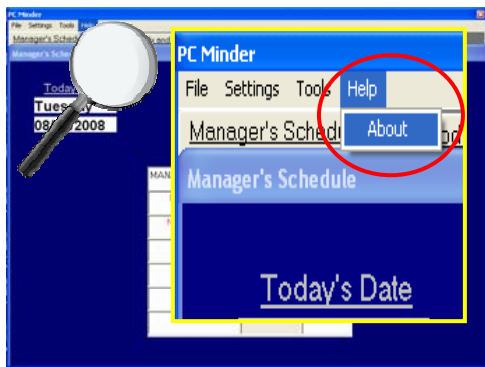


G. Select "Typical", then select "Next"



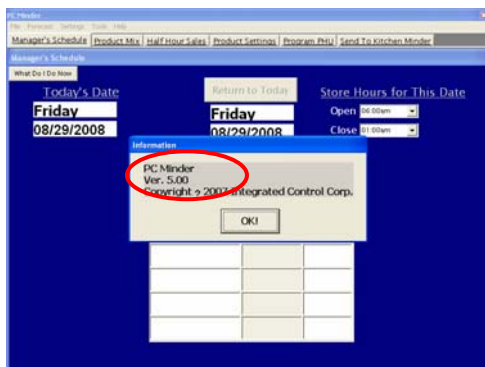
H. Select the "Install" button

I. Select "Finish" when the installation is complete



J. Verify the software has been properly updated by opening PC MINDER™, then select "Help" on the "Menu" bar

K. Select "About"



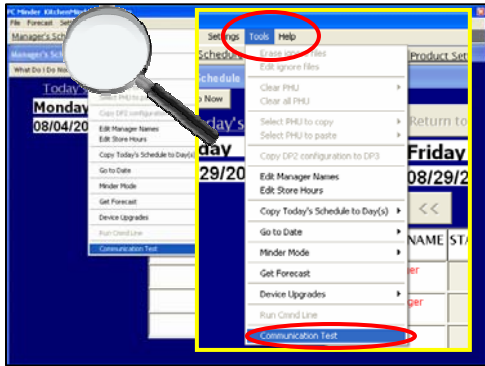
L. View the "Information" window on the screen to verify Version 5.0 is now running

If you see any other version listed in the "Information" box after completing all steps on this page, contact ICC Technical Support at 1-877-ICC-8788 (or local ICC representative)

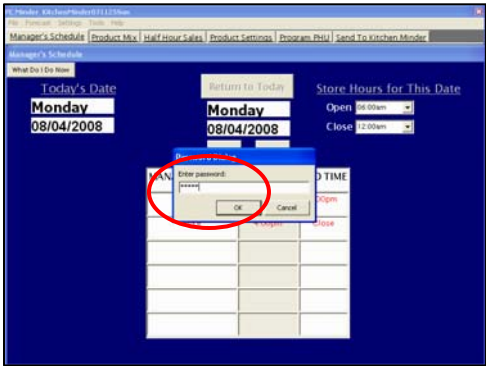
If Version 5.0 is displayed in the "Information" window, you are ready to continue

Update PC MINDER™ on the COMPUTER

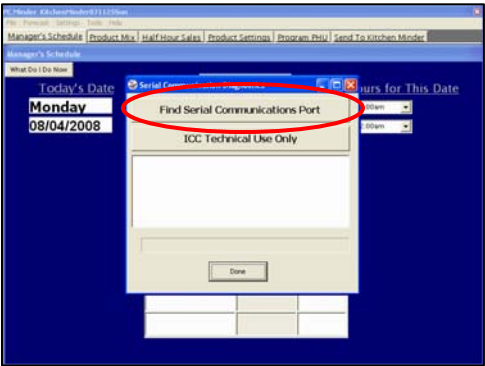
STEP #3 – VERIFY PC MINDER™ SETUP INFORMATION IS CORRECT



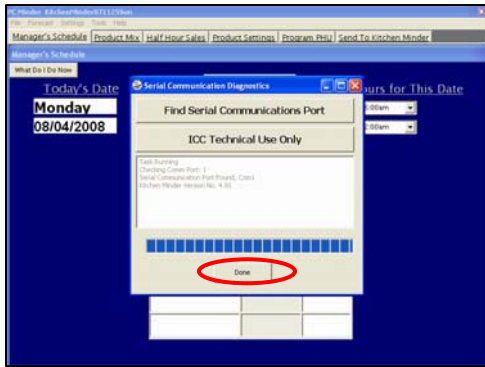
A. Open PC MINDER™. Select “Tools” from the menu bar, then select “Communications Test”



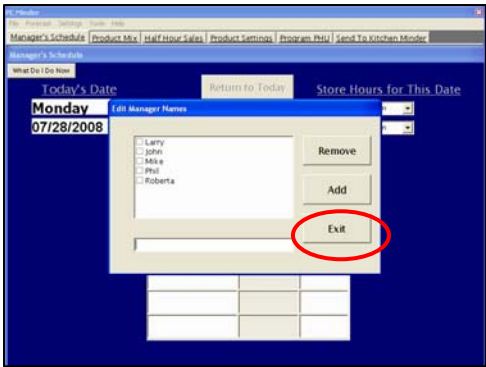
B. When prompted for a password, enter **admin** then select “OK”



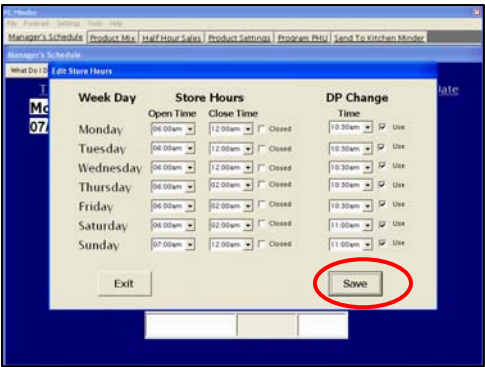
C. Select the “Find Serial Communications Port” button



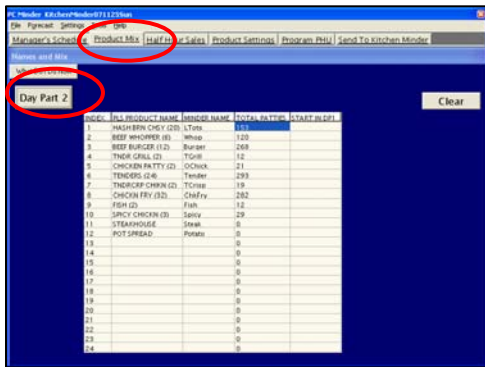
D. When process completes, select “Done”. The com port settings are now set for both PC MINDER™ and QES™. If an error is displayed, follow the on-screen instructions, or contact ICC (or local int’l vendor).



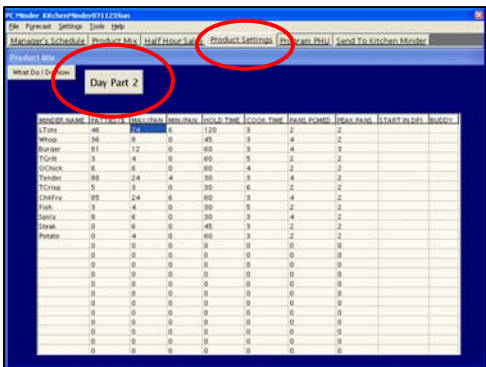
E. On the Manager’s Schedule tab, select “Tools”, then “Edit Manager’s Names”. Verify information is current and adjust as needed. Select the “Exit” button when finished



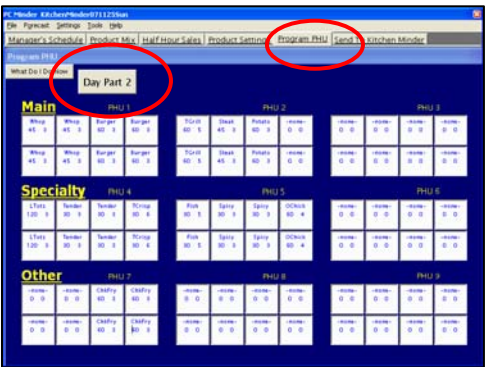
F. On the Manager’s Schedule tab, select “Tools”, then “Edit Store Hours”. Review and adjust as needed. Ensure all “Use” boxes are checked. Select “Save” when finished



G. Select the Product Mix tab. Review all products for accuracy in both Day Part 1 and Day Part 2. Use the “Day Part” button to move between day parts



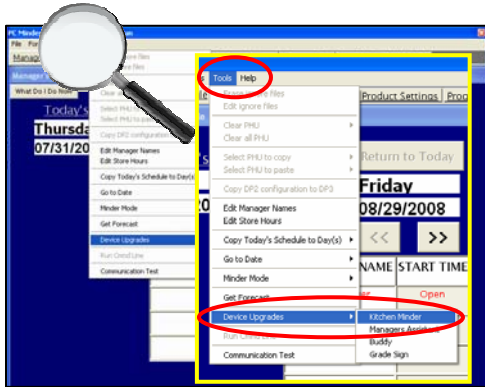
H. Select the Product Settings tab. Review all product information for accuracy in Daypart 1 and 2 by using the “Day Part” button. “MIN/PAN” column should display 0 for every product at this time



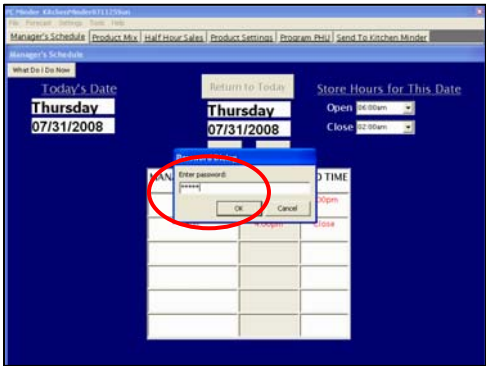
I. Select the Program PHU tab. Review all dayparts for accuracy using the “Day Part” button. When finished, select “File”, then “Save” before proceeding to next step

Update Software on the KITCHEN MINDER™

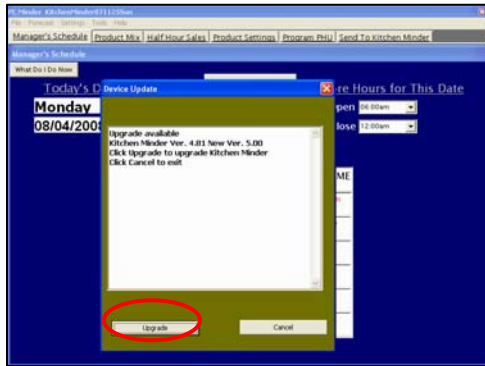
STEP #4 – UPDATE THE SOFTWARE INSIDE THE KITCHEN MINDER™ DEVICE



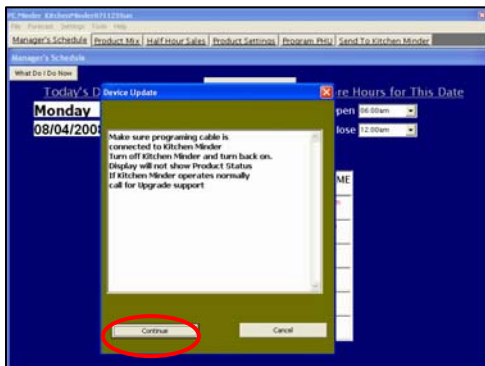
A. From the Manager's Schedule tab, select "Tools", then scroll to "Device Upgrades". Select "Kitchen Minder"



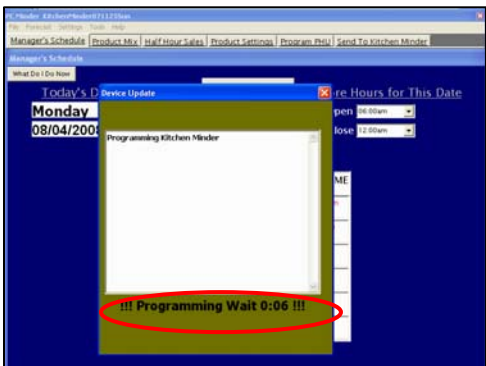
B. If prompted, enter the password **admin** , then select "OK"



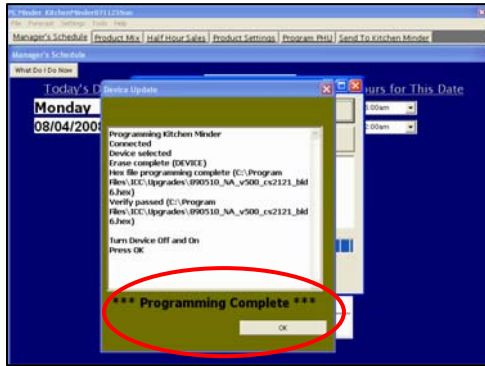
C. When window appears indicating an upgrade is available, select the "Upgrade" button



D. Ensure the programming cable and new connector (Step #1 of this guide) are secure. Using switch on back of KITCHEN MINDER™, turn the unit off then on. Select "Continue" when finished



E. Upgrade progress will be displayed (approximately 3-10 minutes). Do not use the back of house computer, PHU timer bars or the KITCHEN MINDER™ Unit during upgrade



F. When "Programming Complete" is displayed, select the "OK" button

If programming fails, repeat steps A-F. If unsuccessful again, call ICC Tech Support (or local representative)



G. Return to KITCHEN MINDER™ and turn unit off. Turn unit back on, and wait for the screen pictured above to appear, verifying the correct version is installed. Screen should display Version 5.0

If you see any other version listed on the KITCHEN MINDER™ Screen after completing all steps on this page, contact ICC Technical Support at 1-877-ICC-8788 (or local ICC representative).

If Version 5.0 is displayed on the KITCHEN MINDER™ screen, you are ready to continue.

If your restaurant is equipped with the optional MANAGER'S ASSISTANT™ or MINDER BUDDY™, continue to STEP #5. If you do not have either component, continue to STEP #6.

Update Optional MANAGER'S ASSISTANT™ and MINDER BUDDY™ Software

STEP #5 – UPDATE THE OPTIONAL MANAGER'S ASSISTANT™ & MINDER BUDDY™

IF YOU ARE USING THE OPTIONAL 25' GRAY PROGRAMMING CABLE AND CONNECTOR – Proceed to Section A below

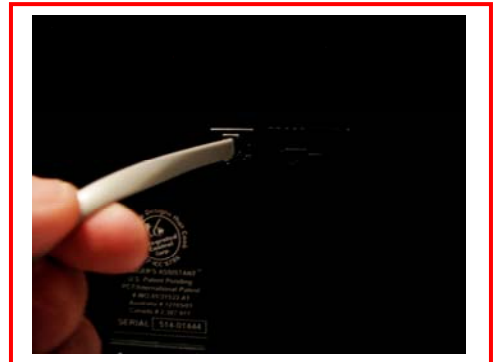
IF YOU ARE NOT USING THE OPTIONAL 25' GRAY PROGRAMMING CABLE AND CONNECTOR - *Carefully remove all cables* from the MANAGER'S ASSISTANT™ AND/OR THE MINDER BUDDY™ Unit to be programmed, and carry the unit to the KITCHEN MINDER™ mounting location. It is *highly recommended* that all cables and their respective ports are labeled to ensure the unit is properly reinstalled following programming. Gently remove the power cable and the programming cable from the KITCHEN MINDER™ Unit and plug them into the same ports of the unit that is to be programmed. Proceed to Section D below when you are ready (Skip A – C)



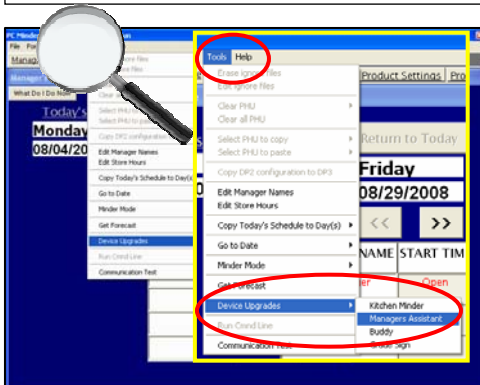
A. Locate the optional 25' gray cable and connector that was purchased from ICC (or local international vendor)



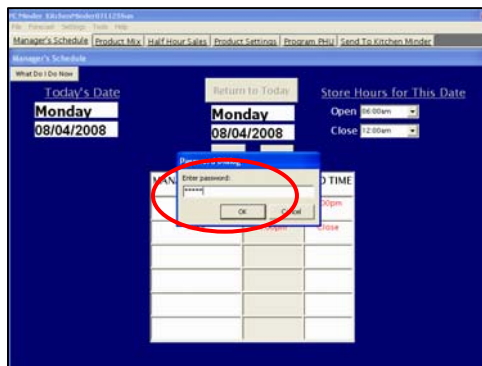
B. On the back of the KITCHEN MINDER™ Unit, *gently* disconnect the grey cable that is plugged into the port labeled Programming. Insert the end of the cord into the adaptor attached to the 25' grey cable



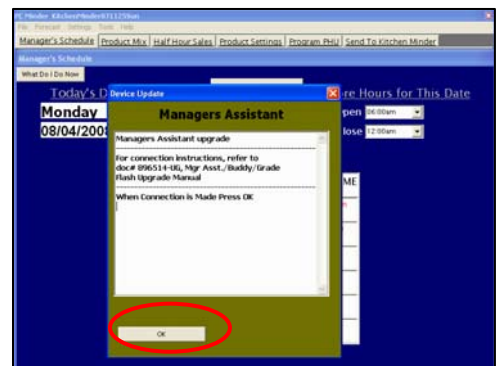
C. On the back of the MANAGER'S ASSISTANT™/MINDER BUDDY™, *gently* remove the cable that is plugged into the Programming port and set aside. Plug the other end of the 25' grey cable into this port



D. In PC MINDER™, select "Tools", then scroll to "Device Upgrades" and select "MANAGER'S ASSISTANT" or "BUDDY" (the device you are about to update)

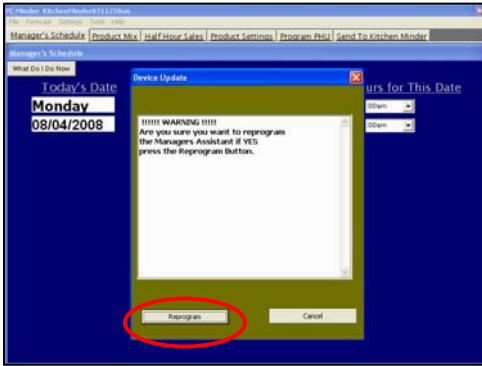


E. If prompted, enter the password **admin** , then select "OK"

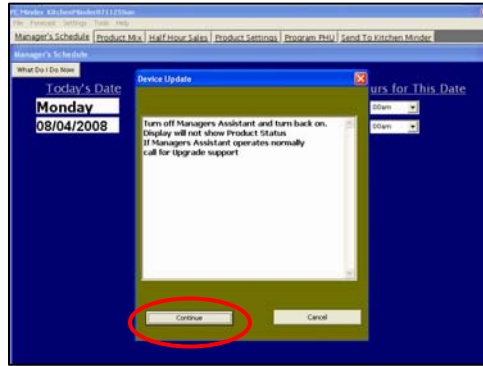


F. Select "OK" on this screen. Note the window title will display which unit you are about to upgrade

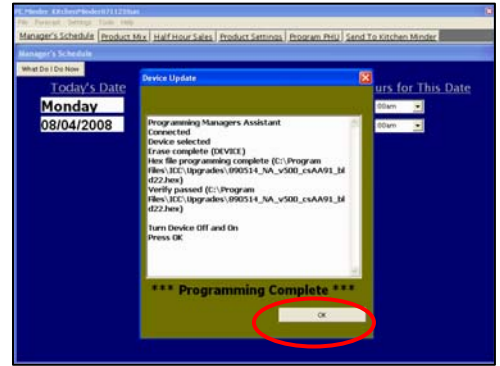
Update Optional MANAGER'S ASSISTANT™ and MINDER BUDDY™ Software



G. Select the “Reprogram” button



H. Turn off the MANAGER'S ASSISTANT™ or MINDER BUDDY™ (the unit you are programming now) and turn it back on. Select “Continue” on the PC MINDER™ Screen



I. Select “OK” when “Programming Complete” is displayed

J. Remove programming cable (if used). Restore all cables to their original locations on all units



K. After reconnecting cables, turn MANAGER'S ASSISTANT™ or MINDER BUDDY™ off, then back on. Wait for the screen pictured above to appear, verifying the correct version is installed - Version 5.0



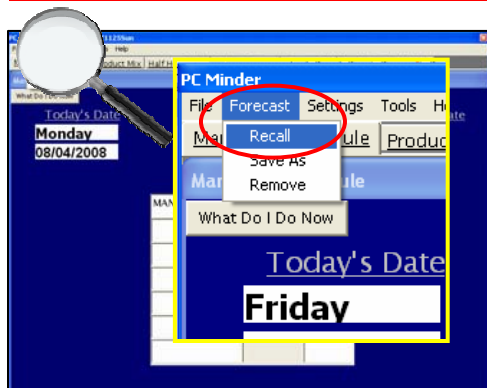
L. IMPORTANT! Once you have verified the software has been updated, you MUST move the cable on the MANAGER'S ASSISTANT™ and/or the MINDER BUDDY™ from COM 3 to COM 4.

If you see any other version listed on the MANAGER'S ASSISTANT™ OR MINDER BUDDY™ screen after completing all programming steps, contact ICC Technical Support at 1-877-ICC-8788 (or local ICC representative)

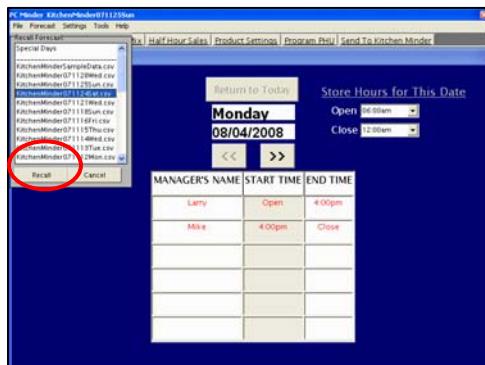
If you have both the MANAGER'S ASSISTANT™ and MINDER BUDDY™, you will need to repeat all items in STEP #5 for the remaining unit. If you do not have both units, proceed to STEP #6

Finalize the Installation Process

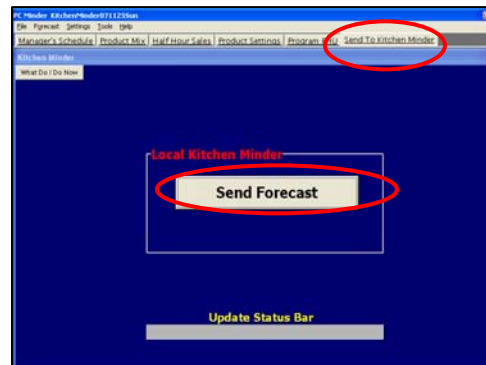
STEP #6 – FINALIZE THE INSTALLATION



A. From the Manager's Schedule tab, select "Forecast", and then select "Recall"



B. Choose the forecast date you wish to use for today's business (recommendation is same day last week), by highlighting the date and selecting the "Recall" button



C. Select the Send To Kitchen Minder tab, then select the "Send Forecast" button

D. If a QES error dialog is displayed, follow the on-screen instructions

If you have experienced any issues with the update, contact:

ICC Technical Support
877-ICC_8788

(or your local ICC representative)

Version 5.0 Update

July, 2009

B. USING KITCHEN MINDER™ 5.0

Please Review! The following pages outline all of the many changes to the PC MINDER™ software and the components of the KITCHEN MINDER™ system. After reviewing this document, please be sure to discuss the changes with each Manager in your restaurant. Most of the revisions will not require any additional steps or activities before using the new software.

Enhancements that involve additional steps or significantly change the way you may have used the software in the past are identified by this symbol:

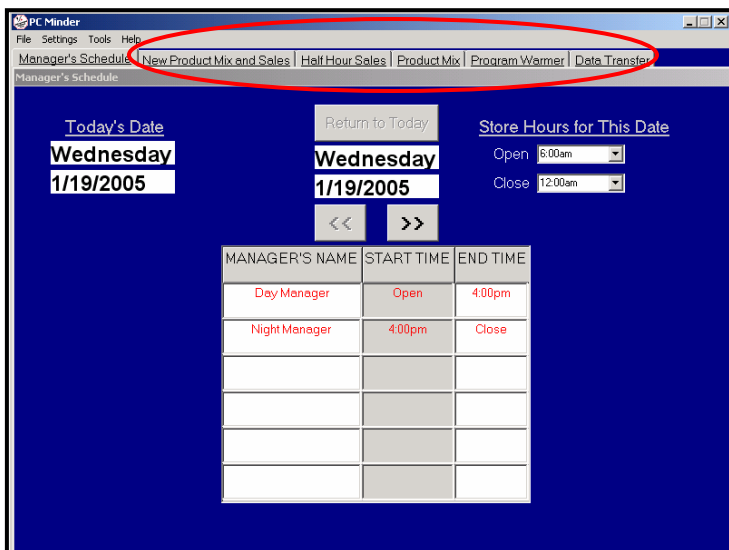


If have additional questions after reviewing this entire document, please contact:

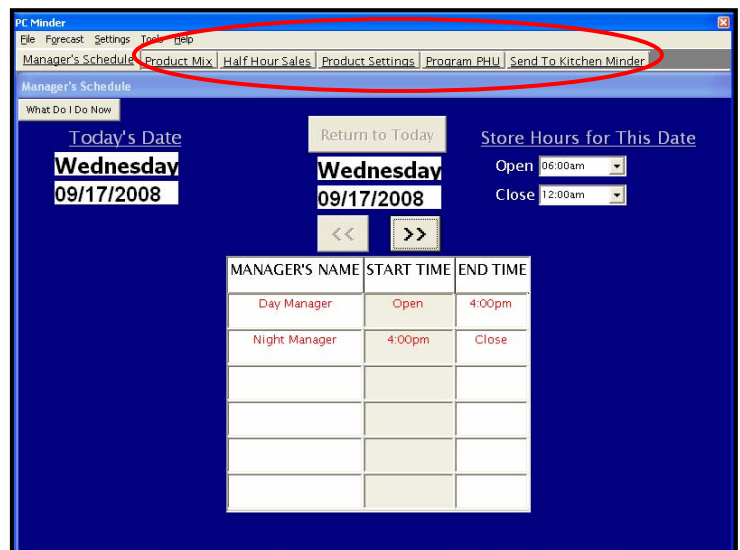
ICC TECHNICAL SUPPORT
877-ICC-8788 (or local international vendor)

1. PC MINDER™ ENHANCEMENTS

A. Changes to terminology used within program – Several changes have been made in the wording used within the PC MINDER™ Software. Most of these changes were designed to make the software more intuitive for new users. Previous versions of PC MINDER™ referred to “Warmers”, which has been changed throughout the program to “PHU”. Tab names have also been changed to more accurately reflect the tasks completed on each tab. (See photos below)

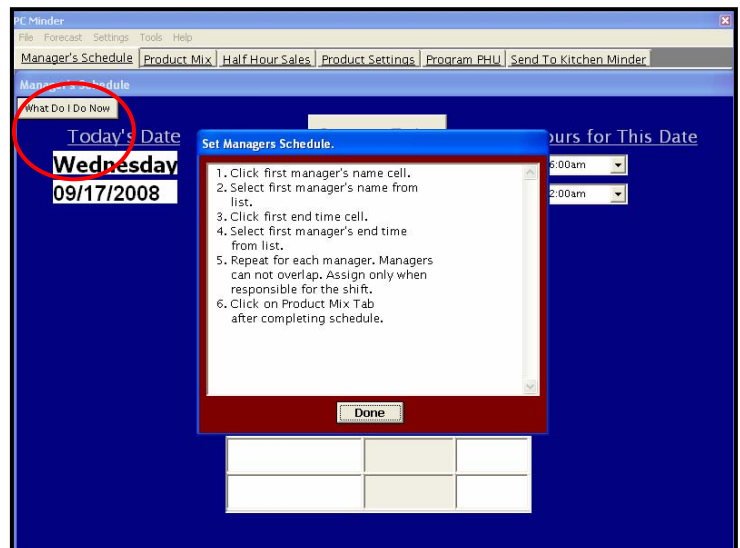


Previous Versions



PC MINDER™ 5.0

B. “What Do I Do Now” (Help) button added to each tab - Each tab within the program now contains a “What Do I Do Now” button. Clicking on this button will display a step-by-step guide for the page currently being viewed. (See photo right)



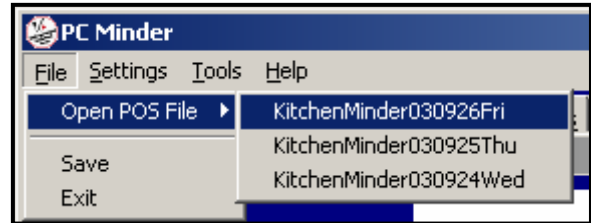
Version 5.0 Update

July, 2009



C. Changes to choosing a forecast – Several changes have been made to the daily process of selecting and sending a forecast to the KITCHEN MINDER™.

In previous versions of PC MINDER™, the user selected “File”, and then “Open POS File”. A list of available forecast files were then displayed. This procedure could only be completed while on the New Product Mix and Sales tab. (See photo right)



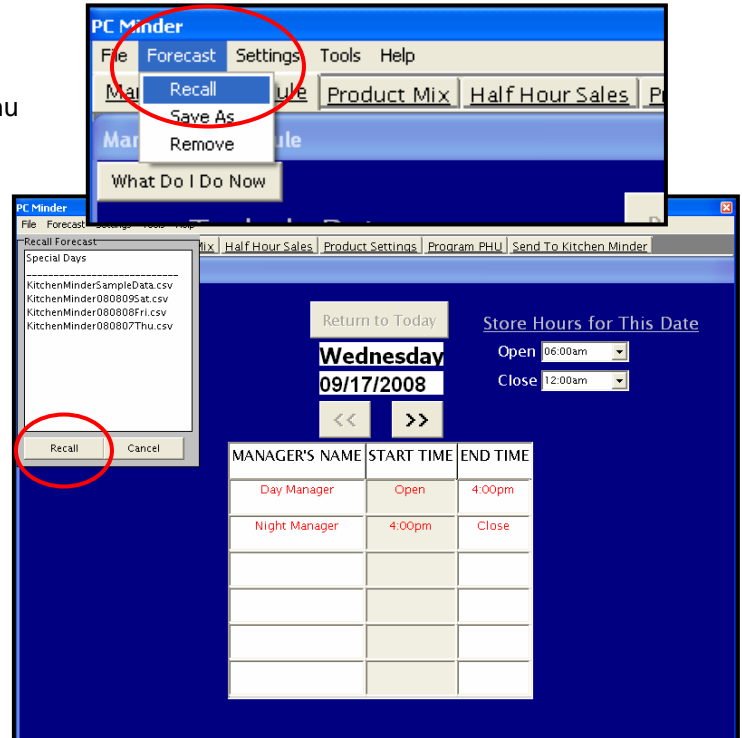
Previous Versions

In PC MINDER™ 5.0, you will now select “Forecast” on the menu bar, followed by “Recall”. (See photo right)

This can be accomplished from any tab within the program. It is no longer necessary to change tabs after entering the Manager’s Schedule for the day.

In addition, previous versions of the software required the user to confirm the Manager’s Schedule before moving to a new tab by selecting “Yes” when prompted. This has been removed in version 5.0. These changes should allow the user to complete the daily process in less time.

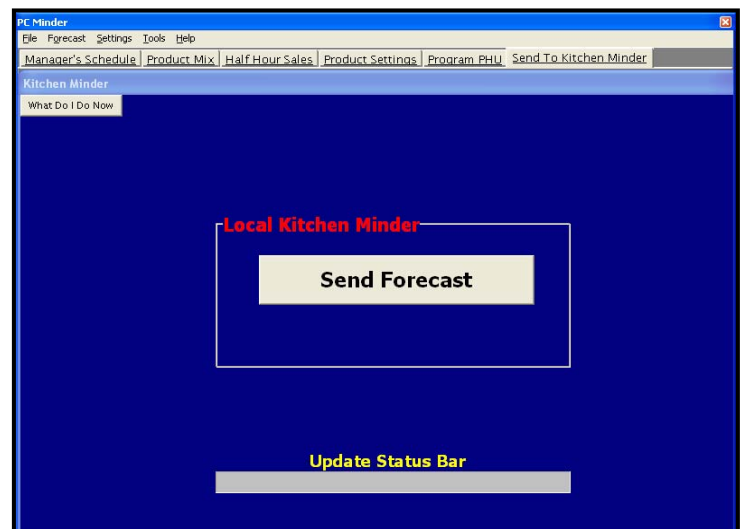
After selecting “Forecast” and then “Recall” from the menu, the “Recall Forecast” window will appear. (See photo right) Choose the day you wish to use by clicking the file name, and then select the “Recall” button.



PC MINDER™ 5.0

D. Change in Send tab – Previous versions of PC MINDER™ gave the user the option to “Send Forecast” or “Get Forecast”. PC MINDER™ 5.0 has been modified to include only the “Send Forecast” button. The “Get Forecast” feature was rarely used, and could create data issues within the software if selected accidentally.

Should you wish to use the “Get Forecast” feature for any reason, simply select “Tools” on the menu, then select “Get Forecast”. You may be prompted to enter a password. If so, enter **admin**. The “Get Forecast” feature should only be used if you have a thorough understanding of its function.



Version 5.0 Update

July, 2009

E. Saving Special Day forecasts – You may save and recall forecasts that are “Special Days”. These are days that represent unusual changes in sales, product mix, or both. These changes could be caused by events such as holidays, car shows, football games, etc. To save a “Special Day” for later use, you must first identify and select the date the special event occurred by following the daily steps for choosing a forecast. Once the date you wish to save has been selected and is loaded into the PC MINDER™ program, follow the steps outlined below:

SAVING THE “SPECIAL DAY” FILE

Step 1 – Select “Forecast” from Menu bar, then “Save As”

Step 2 – Enter chosen name and date for file being saved, then select the “Save” button

Step 3 – Select “Yes” if you are ready to save the file

RECALLING THE “SPECIAL DAY” FILE

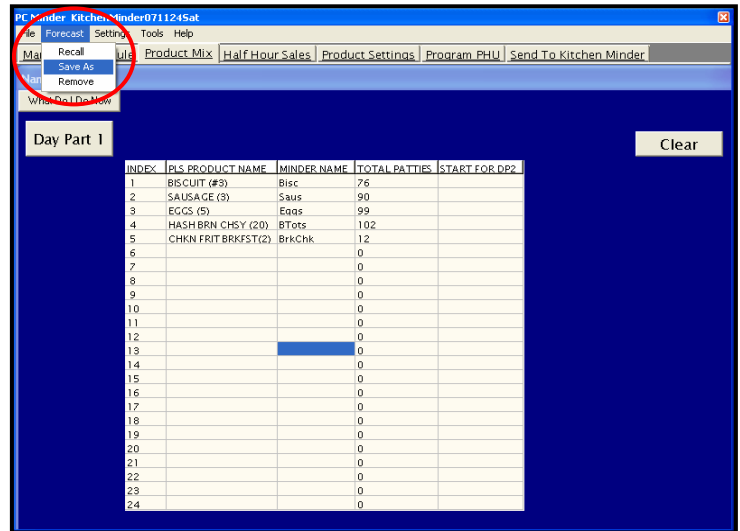
Step 4 – Choose “Forecast” from menu bar, then select “Recall”
Select “Special Days”, then select the “Recall” button

Step 5 – Select the file you wish to recall, then select “Recall” button

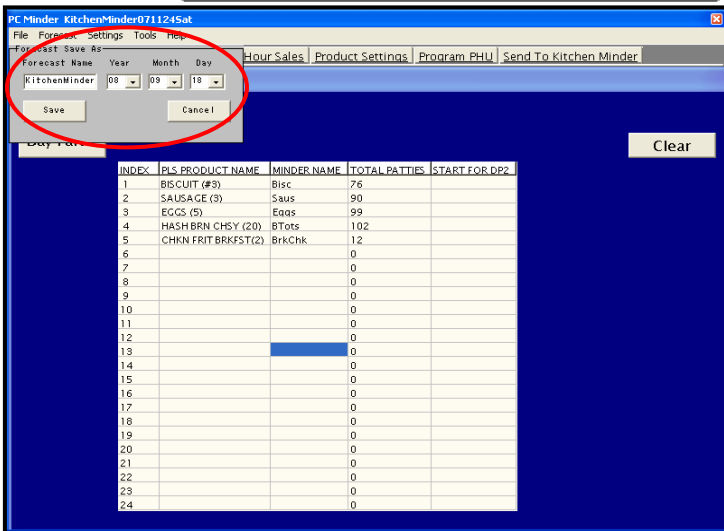


Quick TIP!

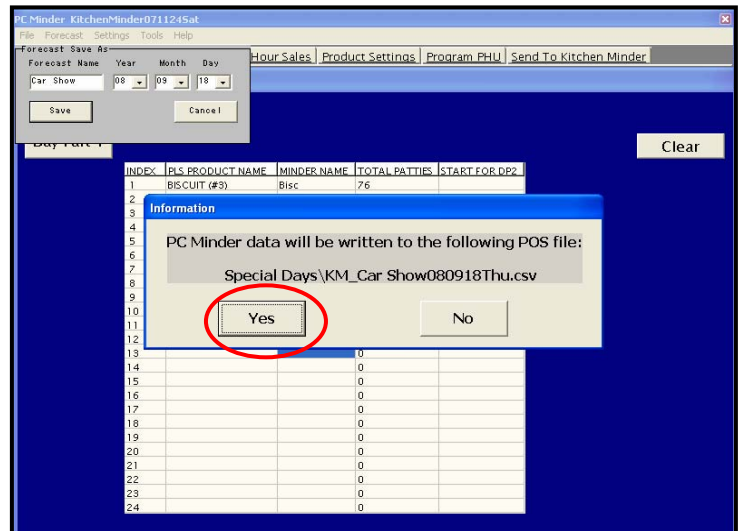
Special Days have a short shelf life, as menu items frequently change!



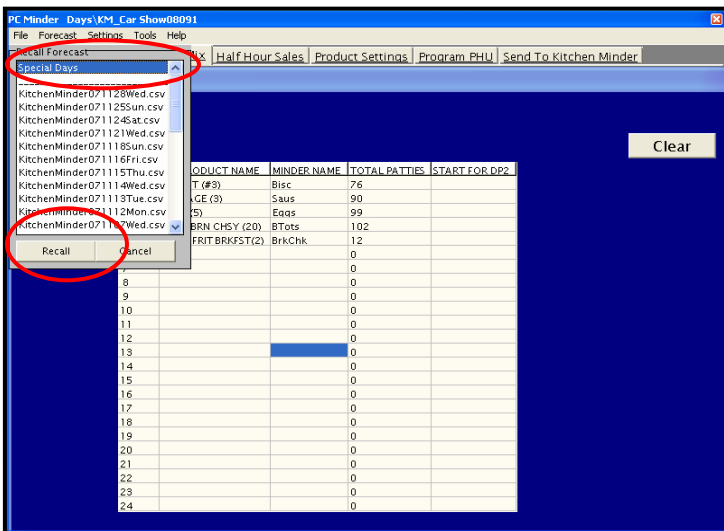
STEP #1



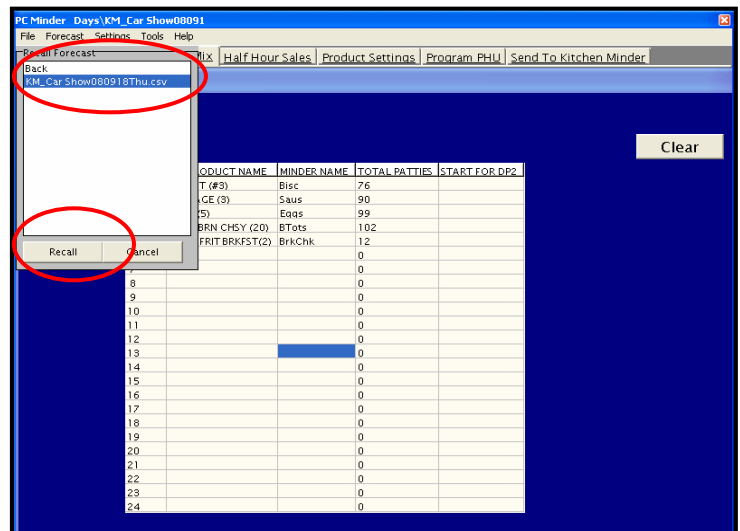
STEP #2



STEP #3



STEP #4

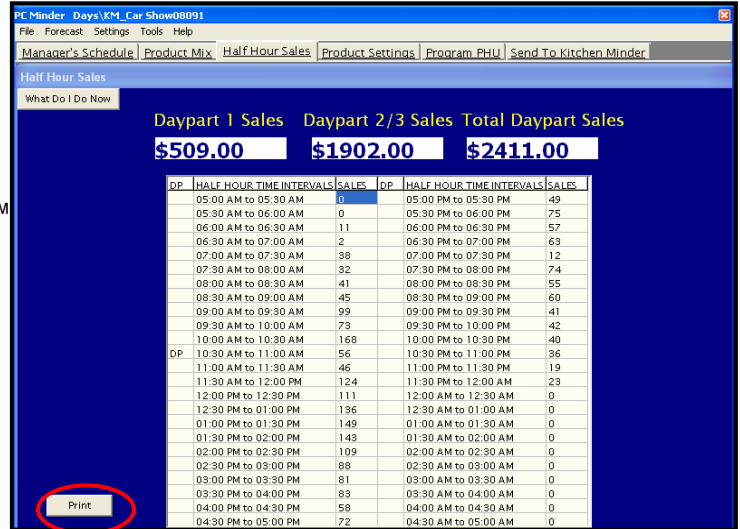


STEP #5

Version 5.0 Update

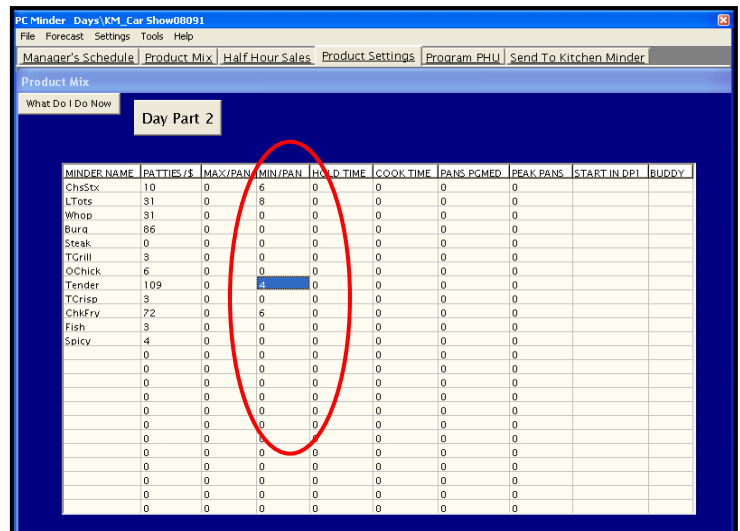
July, 2009

F. "Print" feature – It is now possible to print the PC MINDER™ ½ hourly sales page should you wish to display this for use throughout the day. Simply select the "Print" button while viewing the Half Hour Sales tab. (See photo right)



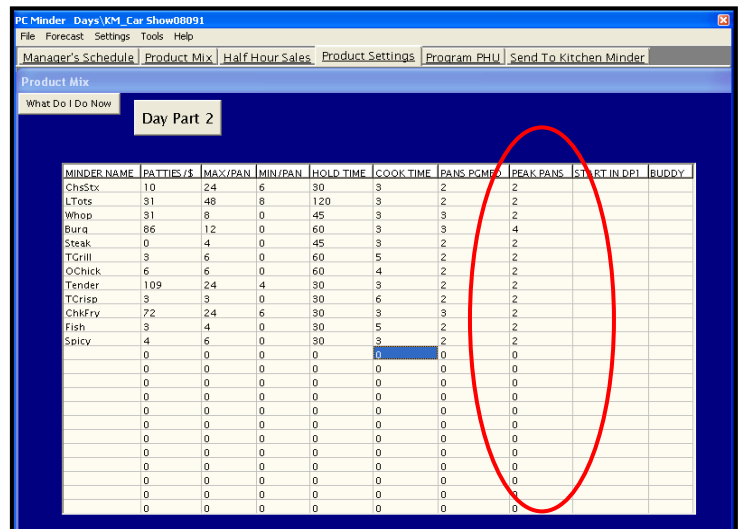
G. "Minimum Per Pan" feature – PC MINDER™ 5.0 now allows the user to set a minimum number of products that the KITCHEN MINDER™ will display. This will prevent the KITCHEN MINDER™ from displaying cooking instructions for individual units of items that are sold in multiple amounts, such as CHICKEN TENDERS® and other finger foods. To activate this feature, go to the Product Settings tab, and select the "Day Part" button to display the proper products. Enter the size that represents the smallest portion that is sold for the product in the "MIN/PAN" column next to the product's name. (See photo right)

Once the change has been sent to the KITCHEN MINDER™, it will no longer display a number to cook for the product that is less than the number chosen for the minimum. It will also then display cooking instructions in multiples of the chosen number (4,8,12,16 for example). ***It is critical that all items that are not sold in multiple pieces be set to 0!***



H. "Peak Pans Needed" feature – PC MINDER™ 5.0 will now display the number of PHU pans needed during your peak ½ hour sales period for each product. This number is based upon the sales and product mix (forecast) that is currently loaded into the program. It is also created based upon the "MAX/PAN" setting you have chosen for each product. This can be very helpful to determine if you have enough PHU pans programmed for a given product, or if you have adjusted the "MAX/PAN" number too low to allow for proper batch cooking to occur during peak periods. You should compare the "PANS PGMED" column against the "PEAK PANS" column daily for each day part, as it will most likely change with each forecast loaded.

If the number for any product in the "PEAK PANS" column is higher or lower than the number in the "PANS PGMED" column on a regular basis, you should evaluate your PHU layout to determine what adjustments can be made.

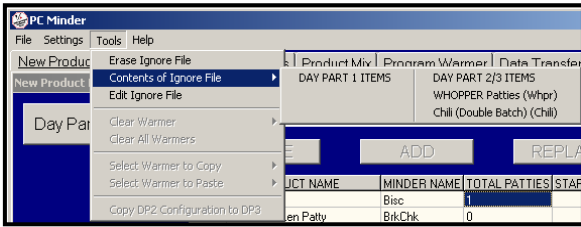




Version 5.0 Update

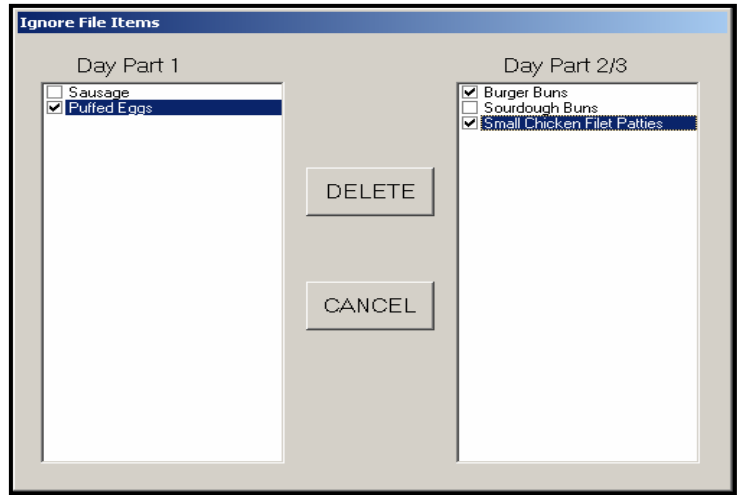
July, 2009

I. Changes to Ignore File functionality – There have been significant changes to the way that the “Ignore File” functions within PC MINDER™. Previous versions of PC MINDER™ would only display the last 25 items that were ignored. Version 5.0 does not limit the number of ignored items that are displayed. Please review the information below for more information on viewing and recalling menu items that have been ignored.



Previous Versions

Access to the “Ignore File” options in previous versions was found in “Tools” on the menu bar. (See photo above) To remove items from the “Ignore File” in previous versions, the user would place a check in the box next to the product, then click the “Delete” key. Version 5.0 has simplified this process!



Previous Versions

To access the “Ignore” menu in PC MINDER™ 5.0, select “Tools” from the menu bar. You must be on the Product Mix tab to access “Ignore” menu items. To view or edit the “Ignore File”, select “Edit Ignore Files”. (See photo #1) Choose the day part you wish to view by selecting the “Day Part” button. Ignored menu items are listed in the drop down box in alphabetical order. To recover an ignored item, select the item, then select the “<<” button. (See photo #2) The item will be added to the list of active menu items on the main table. (See photo #3) Change the name of the item if needed in the “MINDER NAME” column. Select the “Done” button to close the list of ignored items. When a new forecast is recalled, the “TOTAL PATTIES” column will contain the actual usage.

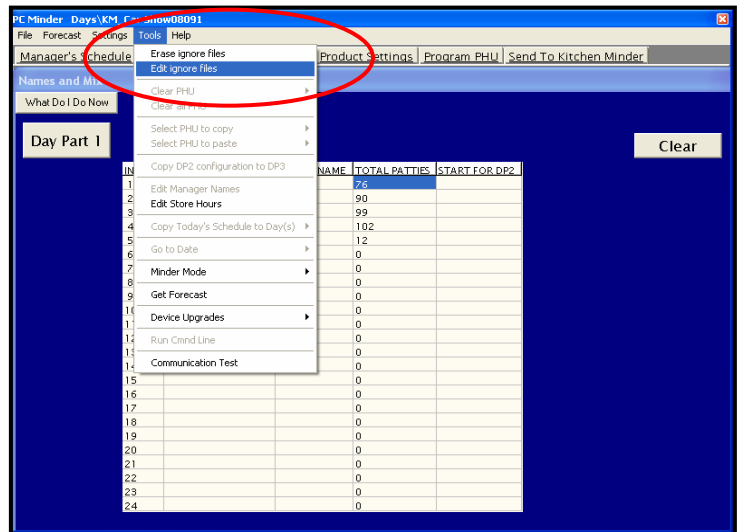


Photo #1 – Version 5.0

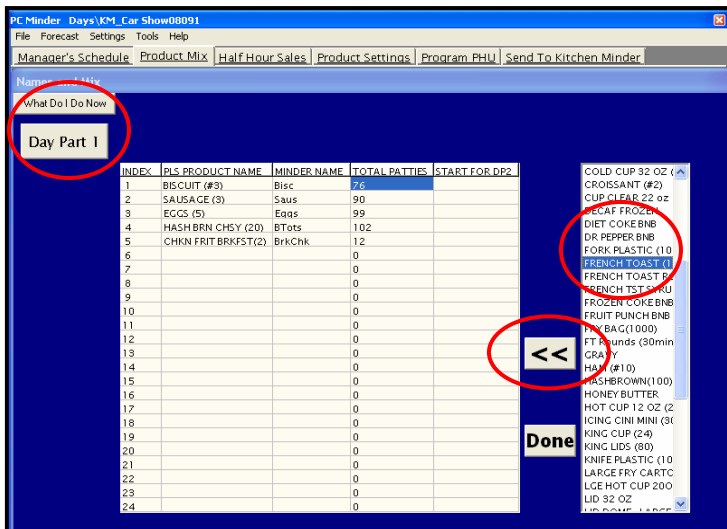


Photo #2 – Version 5.0

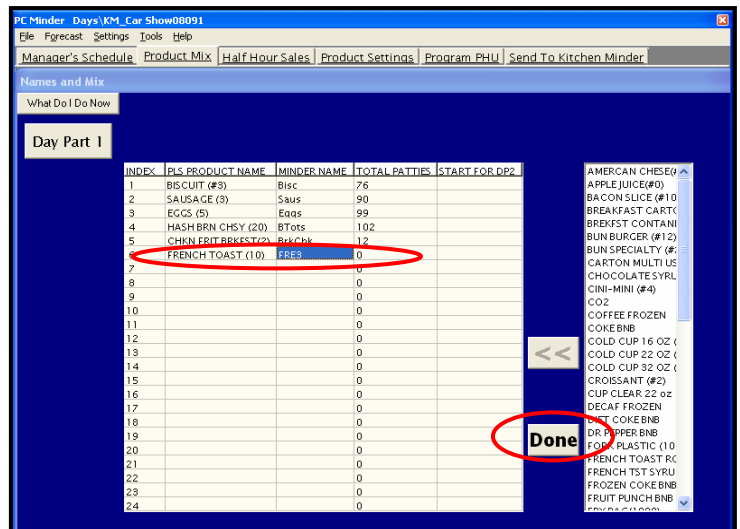
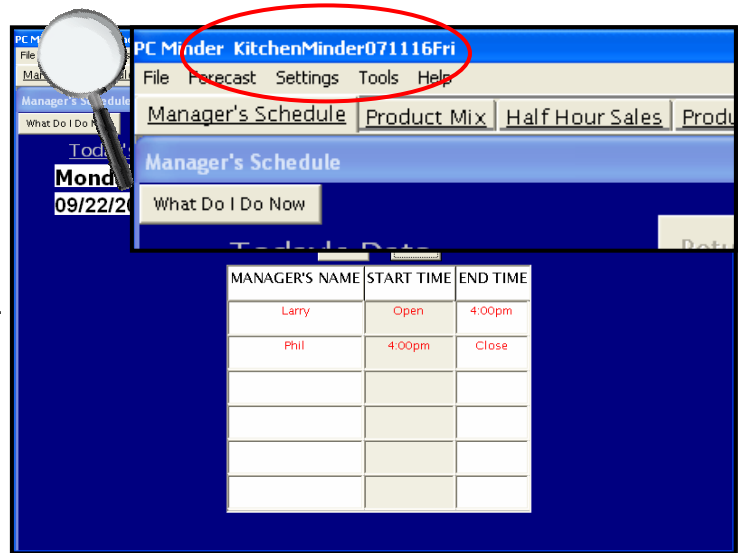


Photo #3 – Version 5.0

Version 5.0 Update

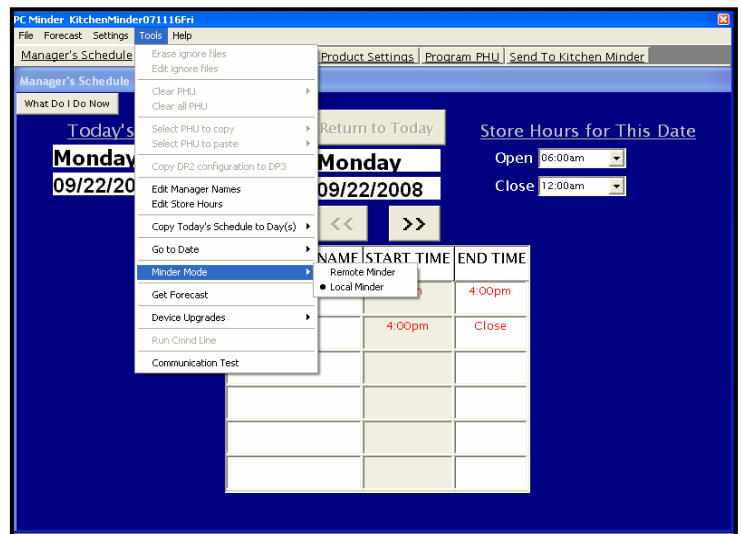
July, 2009

J. Viewing the forecast in use – PC MINDER™ 5.0 now displays the most recent forecast that was loaded into the program. This can be very helpful to determine if the proper steps for using PC MINDER™ are being followed each morning. To view the forecast that was last chosen, simply open PC MINDER™. The forecast file name will be listed in the blue bar at the top of the program screen. (See photo right)



K. Other changes to the “Tools” menu – Changes to most configuration settings in PC MINDER™ 5.0 will require a password to prevent accidental changes from occurring. The password is **admin**. Once the password is entered, it will not be required for additional changes again until the program has been closed and reopened. Other changes to the “Tools” menu are listed below for your reference:

1. “Minder Mode” – restaurants with a back of house computer should be set to “Local Minder”. Only restaurants using the optional MINDER MODEM™ to send and receive forecast information from an off-site computer should be set to “Remote Minder”.
2. “Get Forecast” – This option should only be used by advanced users.
3. “Device Upgrades” – Future upgrades to the software in the various hardware components of the KITCHEN MINDER™ System will utilize this area of the menu. Detailed instructions will be sent with each upgrade in the future.
4. “Communications Test” – Used to identify and set the com port settings for *both* PC MINDER™ and QES™. (See page 3 of this document). It is no longer necessary to set the com port settings manually in PC MINDER™ or in QES™.



Changes to the Calculations Used by the KITCHEN MINDER™

There has been a slight adjustment to the calculations used by the KITCHEN MINDER™ when projecting the amount of product to be cooked and held throughout the day. As a result, users may notice a smaller amount of product being projected for products that are sold infrequently, especially during slower sales periods.

Version 5.0 Update

July, 2009

2. KITCHEN MINDER™ ENHANCEMENTS

A. Changes to the “Menu” display – Several changes have been made to the “Menu” display. While most of these features are no longer used on a regular basis, the changes are outlined in this section for your reference.

“Forecast Select” – Replaces “Kind of Day” menu, changes to this option are outlined later in this document

“Adjust Sales Level” – Replaces “Program Sales Level”, there are no changes to the features for this option

“Program PHU” – Replaces “Program Warmers”, there are no changes to the features for this option

“Comm Mode” – This feature has been removed from version 5.0

“Broiler Saver” – Designed for the Nieco MPB94 broiler equipped with the energy savings feature. The Broiler Saver feature requires additional steps to be activated. See Broiler Saver instructions in this document, or contact ICC for more information.



Previous Versions



KITCHEN MINDER™ 5.0

“Forecast Select” function –

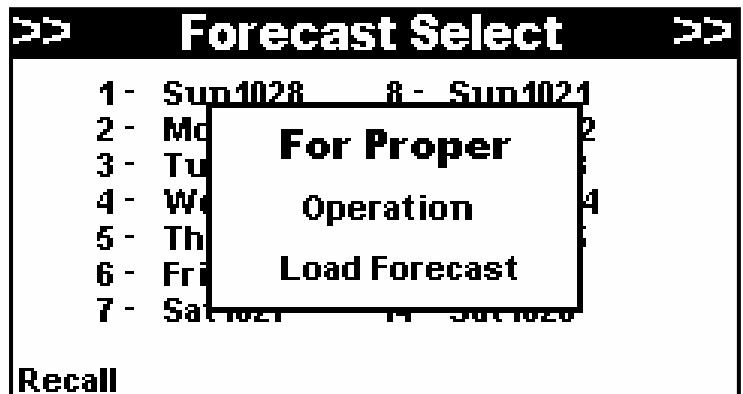
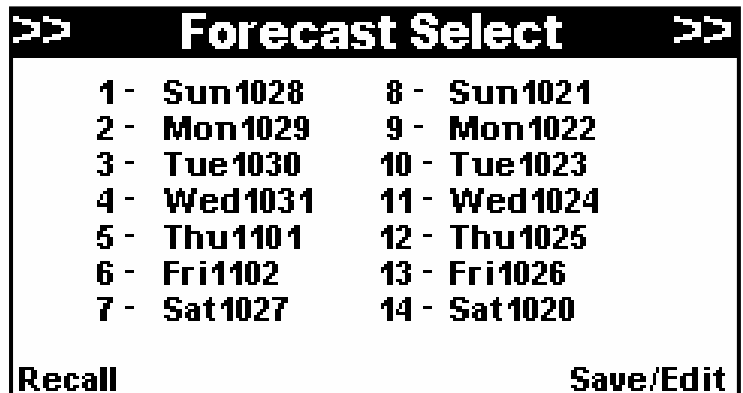
Each morning when a forecast is selected and sent to the KITCHEN MINDER™ from the BOH computer, it is saved on the KITCHEN MINDER™ for future use as needed. The KITCHEN MINDER™ will keep the previous 14 days of forecasts, which can be viewed and recalled using the “Forecast Select” function. (See photo right)

This feature is designed for use as a backup in the event of BOH computer failure, or should communication be lost between the KITCHEN MINDER™ and the BOH computer.

At the beginning of a new business day, the KITCHEN MINDER™ will display the forecast reminder message shown at right. This replaces the “Kind Of Day” message on all previous versions.

Should you need to recall a previously saved forecast, select the left “Function” key (“Recall”). Use the up/down arrow buttons to scroll to the desired forecast, then select the left “Function” key again to select and load the forecast.

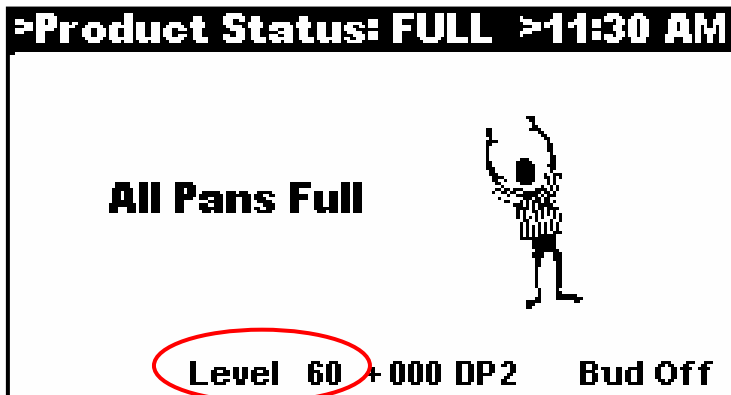
NOTE – You can no longer move beyond this screen until a forecast has been sent from PC MINDER™ or recalled from this screen. This method SHOULD ONLY be used when the use of PC MINDER™ is not possible!



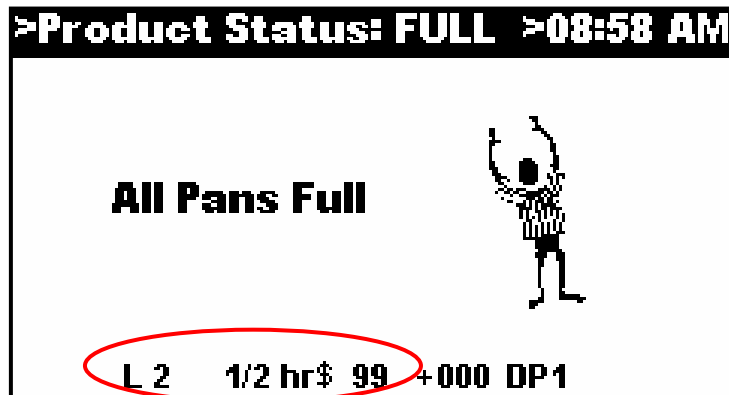
Version 5.0 Update

July, 2009

B. Change to the “Product Status” display – The KITCHEN MINDER™ “Product Status” display now shows both the actual level that the Manager should use for the heat chutes, as well as the ACTUAL ½ HOURLY SALES projection for the current time period. This is a change from all previous versions. (See photos below)

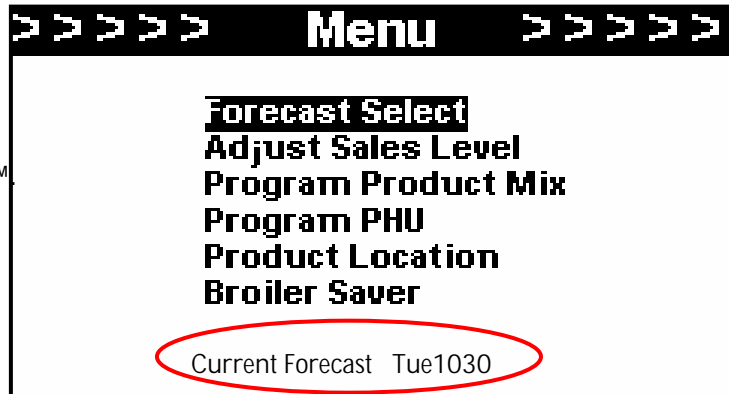


Previous Versions



KITCHEN MINDER™ 5.0

C. Viewing the forecast in use – You may now view the forecast that is currently being used by the KITCHEN MINDER™. Select the “Menu” button on the KITCHEN MINDER™. The forecast that is currently being used will be displayed on the bottom of the screen. (See photo right)



3. QES™ ENHANCEMENTS



A. “Improper Usage Penalty” – Each morning, it is CRITICAL that an appropriate forecast be chosen and sent from the back of house computer to the KITCHEN MINDER™. This ensures the accuracy of the KITCHEN MINDER™ Sales and product projections. Beginning with Version 5.0, should a forecast not be selected by the opening time of the restaurant, the restaurant’s grade will immediately move to F, and remain at F until a forecast has been sent to the KITCHEN MINDER™.

For restaurants that serve both breakfast and regular menu items, it is also very important that the KITCHEN MINDER™ be adjusted from “Day Part 1” (breakfast) to “Day Part 2” (regular menu) at the proper time. The KITCHEN MINDER™ reminds you to do this 15 minutes prior to the scheduled change over time to allow for proper batch cooking. Beginning with Version 5.0, “Day Part 2” MUST be selected by the scheduled change over time. If it is not, the restaurant’s QES™ Grade will immediately move to F, and remain at F until “Day Part 2” has been selected on the KITCHEN MINDER™.

Version 5.0 Update

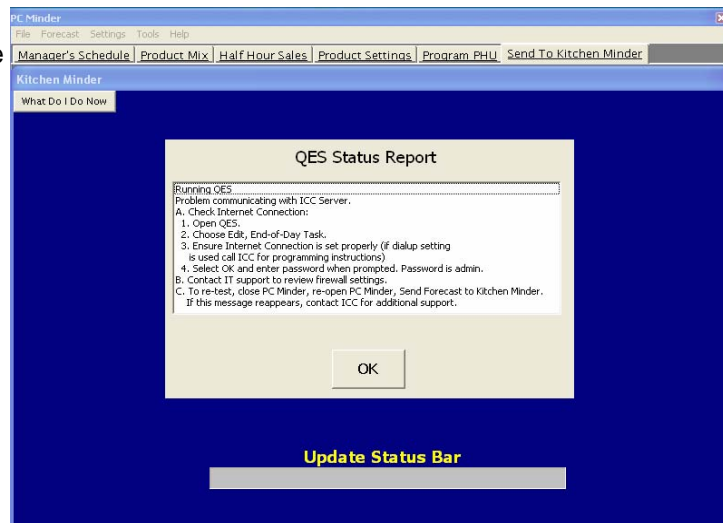
July, 2009

B. Changes to QES™ “End of Day” process – There have been several enhancements to the way the QES™ functions during the “End of Day” process. Many of these changes are not visible to the user, but will improve the accuracy of the QES™ Data. These changes will also assist in ensuring data is sent from the restaurant to the ICC website daily.

Following every “Send” that is completed, the QES™ Software will automatically check to see if the required data files were sent to the ICC website during the “End of Day” process. This data is sent to ICC to populate the QES Online™ Reports. If the files were not sent, QES™ will attempt to complete this task following the “Send” function.

If the process does not complete successfully, an error message will be displayed. (See Photo Right) Follow the on-screen prompts to correct the issue.

If you are unable to correct the issue and the error message continues to be displayed after each “Send” function, contact ICC Tech Support at 877-ICC-8788 (or international vendor).



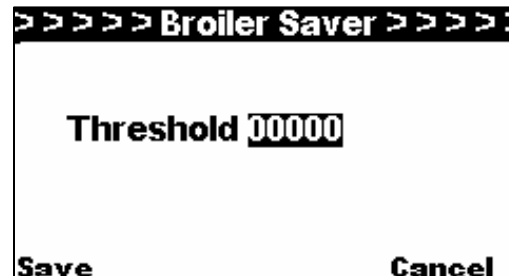
4. “BROILER SAVER” FEATURE (For Use With the Nieco MPB 94 Energy Management System)



KITCHEN MINDER™ Version 5.0 supports the Nieco MPB 94 EMS system by providing your Management Team with reminders throughout the day to use the EMS system. To activate this optional feature, follow the steps below:

A. Setting up the “Broiler Saver” feature:

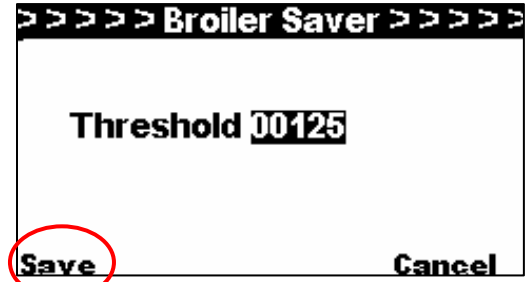
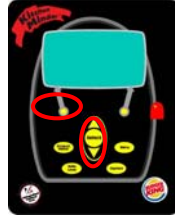
1. Select the “Menu” button on the KITCHEN MINDER™
2. Select the “Sales Level” and “Daypart” keys *at the same time*. The “Menu” screen should now display the “Broiler Saver” option. (See Photo Right) Use the “Down Arrow” key to scroll to and highlight the “Broiler Saver” feature. Press the “Select” key on the KITCHEN MINDER™
3. The KITCHEN MINDER™ displays the “Threshold” screen



Version 5.0 Update

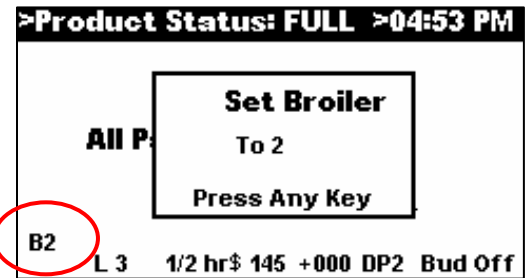
July, 2009

4. Use the “Up/Down Arrow” keys to increase the ½ hourly sales level to the desired amount. Select the left “Function” key to save your change

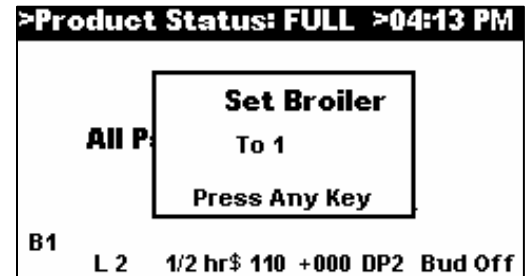


B. Using the “Broiler Saver” feature:

1. When ½ hourly sales for any half hour period rise above the pre-selected threshold, the KITCHEN MINDER™ Screen will display a reminder message to set the EMS on the Niemo MPB 94 to Position 2 – “Full Operation” mode. The “Product Status” screen on the KITCHEN MINDER™ will also now display B2 continuously throughout the day.



2. When ½ hourly sales for any half hour period fall below the pre-selected threshold, the KITCHEN MINDER™ Screen will display a reminder message to set the EMS on the Niemo MPB 94 to Position 1 – “Normal Operation” mode. The “Product Status” screen on the KITCHEN MINDER™ will also now display B1 continuously throughout the day.



NOTE – Should you wish to hide the “Broiler Saver” setting on the “Menu” screen after setting the threshold, you may do so by selecting the “Sales Level” and Daypart” keys *at the same time* while on the “Menu” screen. The “B1” and B2” displays, as well as the reminder messages will continue to function.

Should you wish to stop using the “Broiler Saver” feature, you must first change the sales threshold to 0 and select “Save”. The “B1” and “B2” displays, as well as the reminder messages, will no longer be displayed.